

Winisis under Microsoft Virtual PC for 64 bits – Part II

Ernesto Spinak – 25/07/2011. draft 2

❖ Introduction

Winisis is a Windows application using program libraries (DLLs) for 16 and 32 bit systems, which means that you cannot run Winisis directly in a 64 bit environment.

In order to run Winisis under Windows 7 you have to install a VM (Virtual Machine) on the 64 bit PC. A VM is a piece of software that emulates a different operating system and allows you to run programs written for previous versions of Windows.

Windows 7 comes in five different 64 bit versions: Starter, Home Premium, Professional, Enterprise, and Ultimate. If your version is Professional or higher, the installation instructions for the recommended option "*Windows XP Mode with Virtual PC*" were given in Part I of this guide. In the present document (Part II) we will explain how to install Microsoft's "*Virtual PC 2007 SP1*" for the Windows Home Premium version.

In Part III we will present the installation instructions for VMware Player, which is a non-Microsoft solution.

Notes:

- After installing "*Virtual PC 2007 SP1*" on your 64 bit machine (the host), you will need a CD with Windows XP and a valid license number. Take note of the license number and keep it at hand.
- During installation you will have to register the username you normally use to get access to your PC, and also the name and workgroup of your PC. This information is found in the Start menu. Rightclick the option "My PC", select "Properties" and you will find the PC name and workgroup in the central panel of the window that opens. Take note and keep at hand for later.
- The full installation of "*Virtual PC 2007 SP1*" and Windows XP will take about one hour. If you are unexperienced with installing operating systems from CDs, we recommend that you get some assistance.
- We do not recommend using the Windows 7 64 bit Starter edition because it has only basic features.
- The Microsoft VM solution has been tested in the following scenarios where it works well:
 - 64 bit PC/Notebook standalone with Winisis and databases on the same machine.
 - Winisis installed on a 64 bit server, reading ISIS databases from a 32 bit PC over a LAN (local areal network).
 - Winisis on a 32 bit PC, reading ISIS databases from a 64 bit Server.
 - Other combinations of the previous two.

❖ Procedure for installation of Virtual PC 2007 SP1

The process is done in two stages: (1) install the VM "Virtual PC 2007 SP1" on the Windows Home Premium 64 bit machine; (2) install Windows XP under the created VM.

Go to Microsoft:

<http://www.microsoft.com/download/en/details.aspx?displaylang=en&id=24439>

- Select your working language, (figure 1)
- Select the 64 bit version and download it
- Save it in an auxiliary folder on your PC (in fig. 2 we have used c:\shareware).

The application is called "setup.exe", and we recommend saving it with a more specific name such as VirtualPc2007setup.exe. Attention: Make sure the version is SP1.

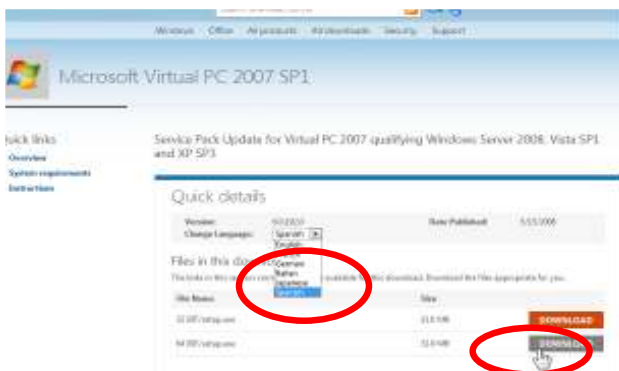


Figura 1

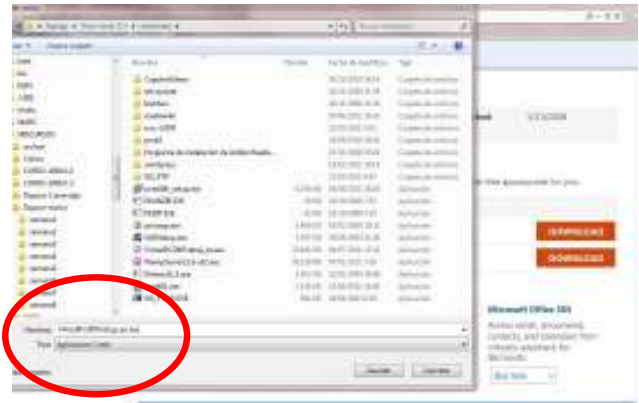
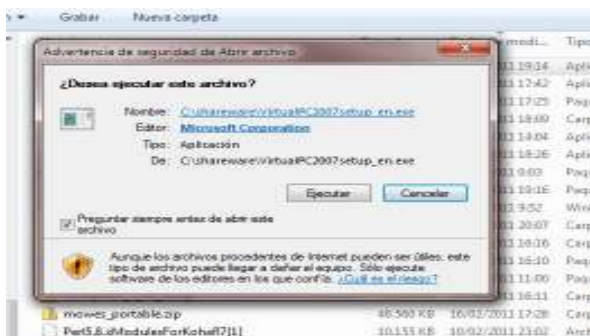
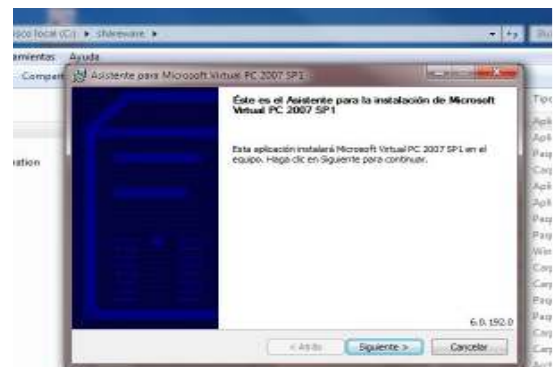


figura 2

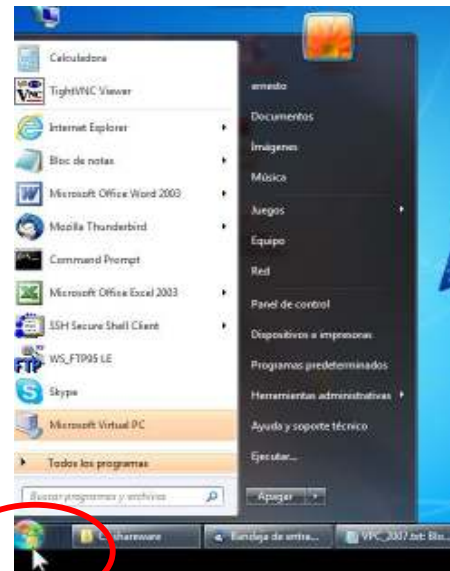
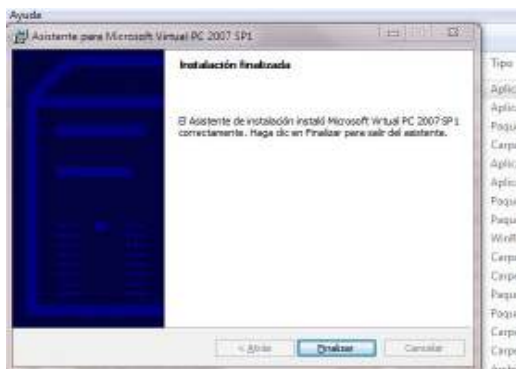
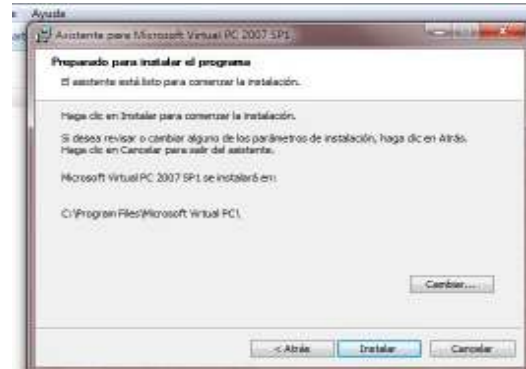
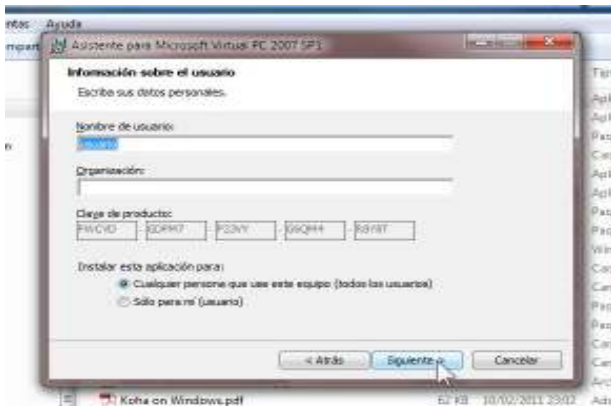
After saving the file, click on it to run the setup program. It will behave like a typical Microsoft installer. For brevity we here show just a few screenshots as guidance.



If you get a security warning message just ignore it and continue with the execution.

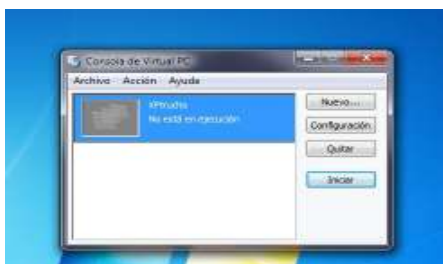


You will be asked for a username. Use the same one you use to get access to your PC. Accept all the default settings until the end of the installation process of Virtual PC 2007 SP1.

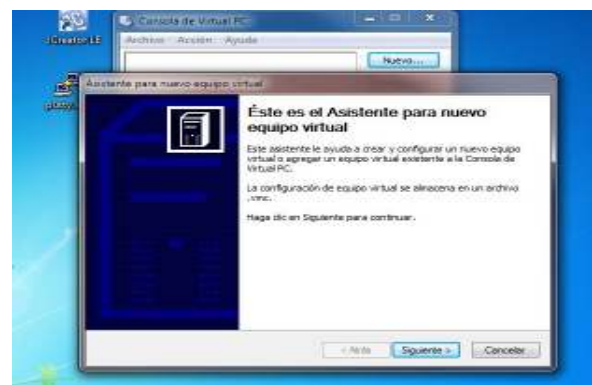


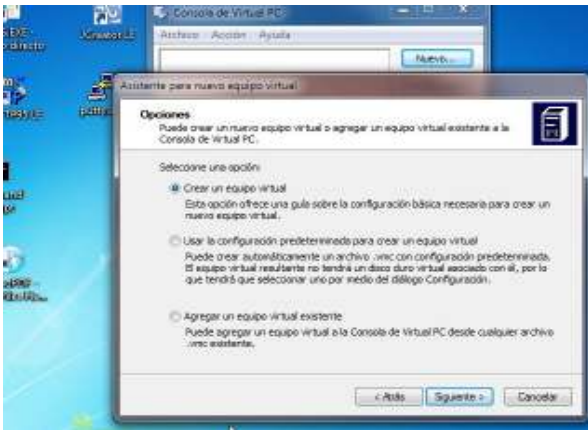
Once the installation is finished, press the Start button of your PC and in the Menu you should find the new option "Microsoft Virtual PC" that you have just installed. This application manages the VMs you have installed on your machine (you can in fact have more than one VM).

VM management is done in the console shown below.



As we don't have a VM installed yet, we will now create it and then install Windows XP.





(1) Select the option "Create a Virtual Machine" and accept all the default settings for the location of files.



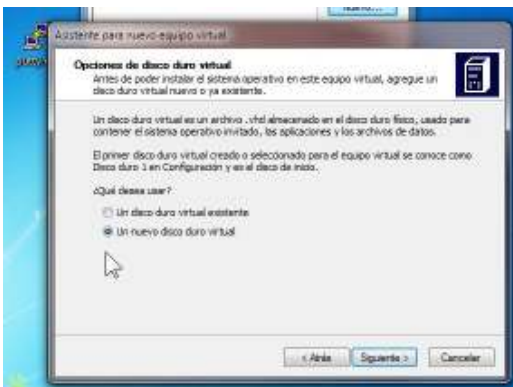
(2) accept the path and give your new VM a significant name, such as: **WindowsXP**



(3) accept



(4) Assign at least 512 MB of RAM to your VM



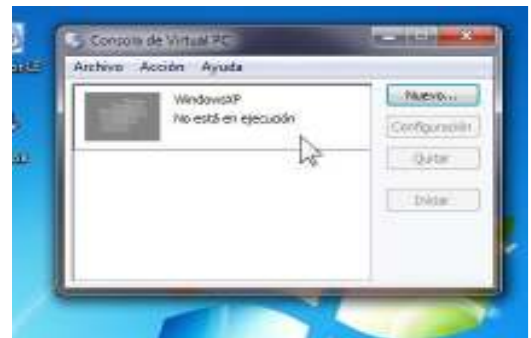
(5) Select Create a new virtual harddisk.



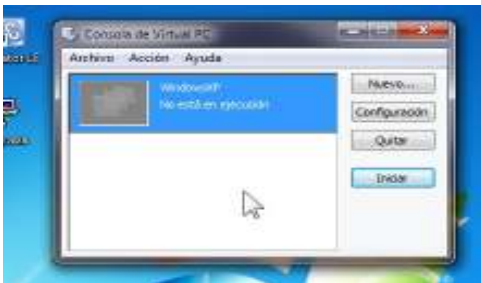
(6) Assign to the virtual harddisk sufficient memory, at least 10000 MB = 10 GB



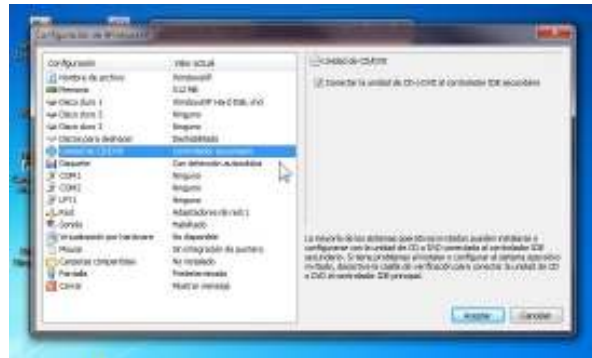
Congratulations! Your VM has been created.



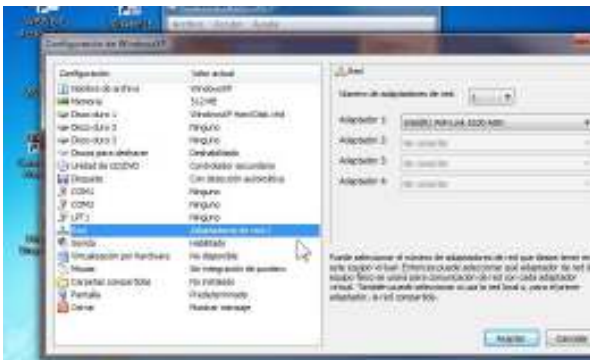
The Virtual PC console will open automatically with the name **WindowsXP** or whatever you gave it during installation



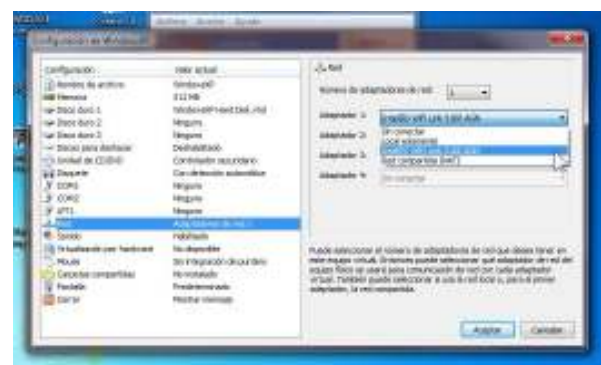
Select the VM. It must first be configured for use.



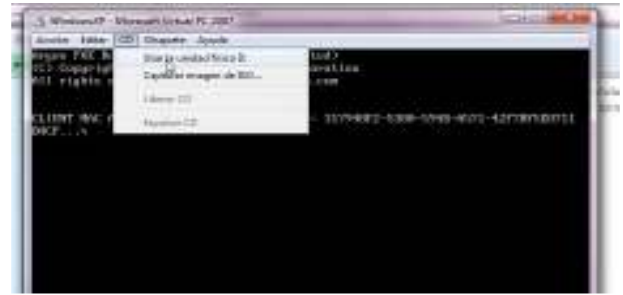
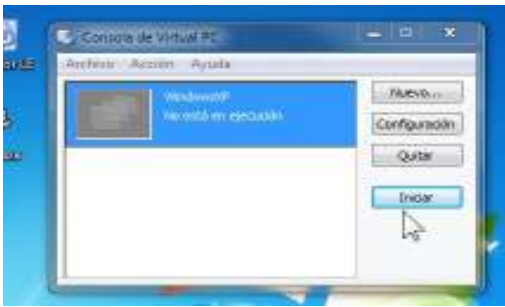
Select the CD o DVD containing Windows XP to be installed.



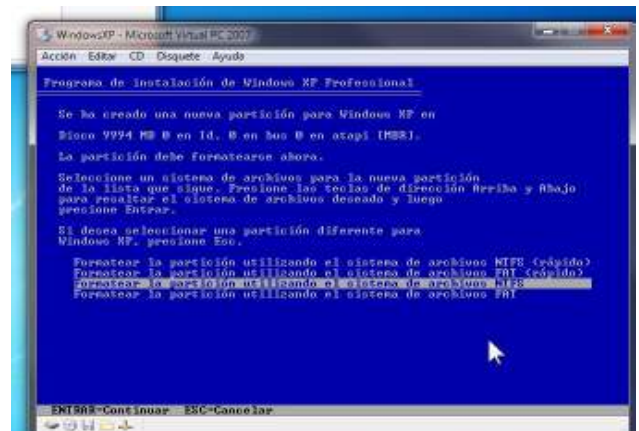
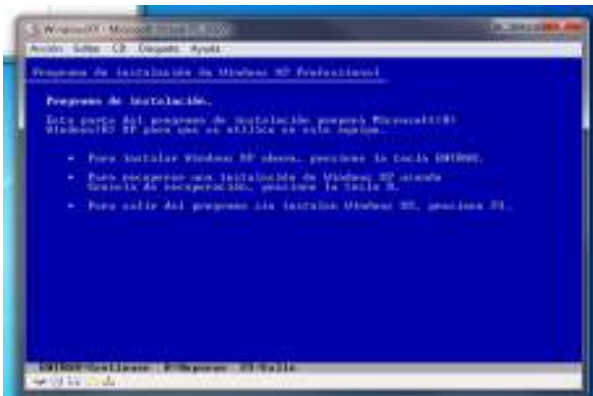
Select the Network adapter mode.



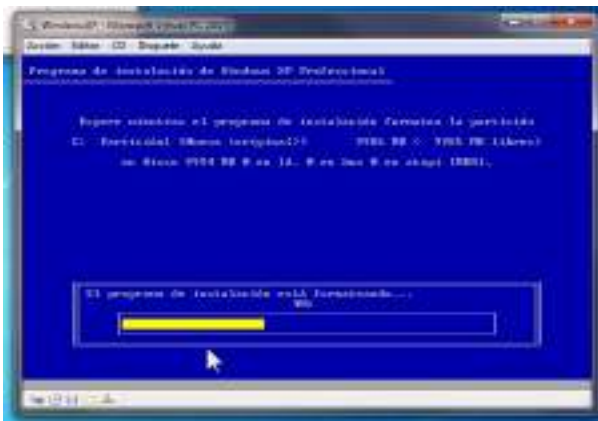
It is recommended to connect the VM to the same network as your host equipment (your PC). Therefore, select *Adapter 1*. In this example, we are using a WI FI network



After finishing configuration, click Start, select "CD drive" in the VM Menu (Unit D: in this example). Next, close and reopen the VM.



With the VM active, click Start, and Windows XP will start installation. You will be asked for a valid XP license number.



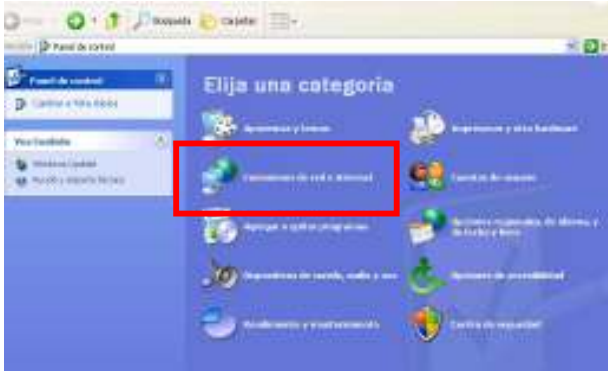
- The process that follows is a classical Windows XP installation, that can take about one hour. Follow all instructions until a successful finish. If you are unexperienced with installing operating systems from CDs, we recommend that you get some assistance.

At the end you will have one window showing Windows XP and another showing the VM management console under the 64 bit host system as seen in the figure at right.

Next, you should connect the VM to your host machine (consider that from a functional point of view these are TWO separate machines).

To connect the VM use the following sequence of commands:

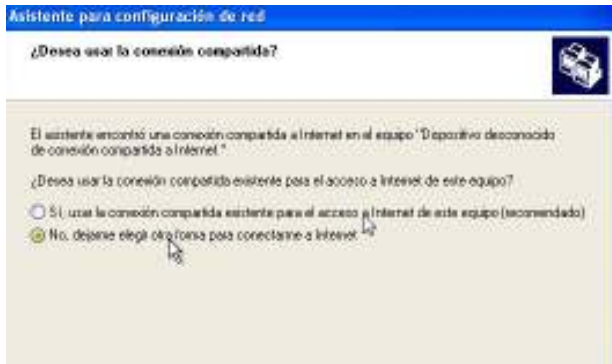
- Click the Start menu on your PC
 - Control Panel / Network and Internet connections
 - Configure or modify a local or small office network
 - The configuration wizard opens.



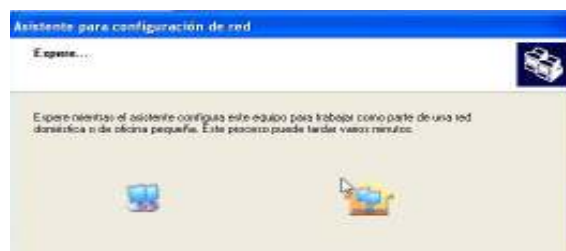
The configuration requires the following steps, as shown in the figures below:

- Do you want to use a shared connection?
 - Wizard options → select the 2nd option.
 - Select connection method
 - Description of the machine
 - Name of equipment
 - Name of workgroup
 - Share files and printers

- (*answer NO*)
- (*default*)
- (*select the 2nd option*)
- (*free text*)
- (*accept the suggested name*)
- (*copy name from your notes*)
- (*select the 1st option*)



Wait while the installer takes some time establishing all the connections according to the selected configuration. At the end it will give you back the control of the VM.



Note:

If the host is not connected to a network (WI FI, for example) you will have to configure the network adapters of the host and VM to make them belong to the same network. In this case you must assign a different IP to each of them (usually 192.168.1.2 for the host and 192.168.1.3 for the VM, with mask 255.255.255.0). Please note that if you wish to connect through WI FI and you already have access to that network, you should select "Obtain IP address automatically" for both host and VM. (If this note seems complicated, get assistance from someone more experienced).

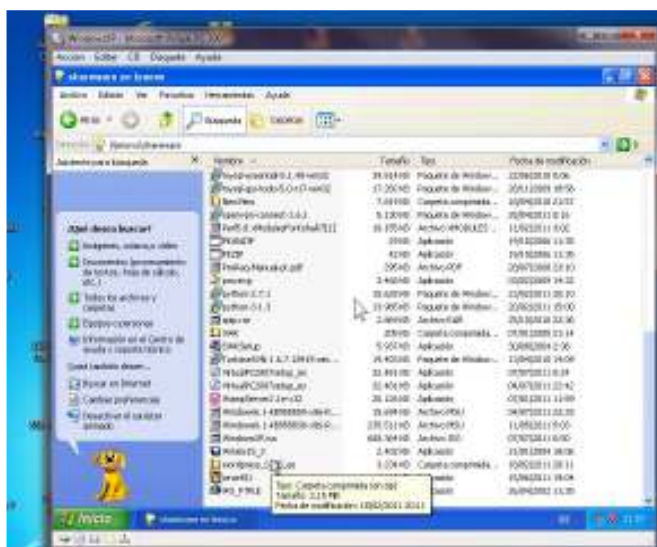
❖ **Procedure to install Wisis in the VM**

First of all you should have a copy of the Wisis installer in a shared folder on the host, in order for both machines to connect.

For example, in the figure at right the folder `c:\shareware` is shared for the user TODOS (all) and here we have a copy of the installer `Wisis15_3.exe`.

Access the Windows XP VM, select Network, connect to the host, copy the `Wisis15_3.exe` installer to a folder on the VM and activate the installer.

Wisis will become operational in Windows XP environment.



Note:

Remember that the host and VM behave as two separate machines. While you are using the keyboard or the mouse in one of them, the other one is inactive. The XP VM captures the mouse and keyboard, so in order to move back to the host environment you must press the **[Alt right]** key. You can also toggle between full screen and small window with **[Alt right] + [Enter]** keys .

❖ **Acknowledgements**

I would like to thank the expert in computer infrastructure Engineer Diego Muses, for his help and collaboration to solve this problem.

And for the translation to English, thanks go to our colleague Wenke Adam as usual.